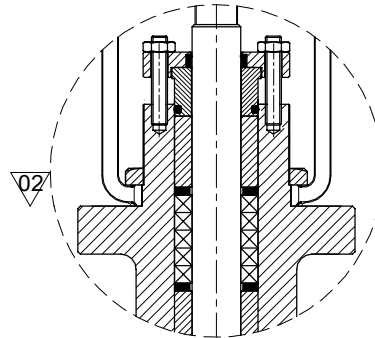
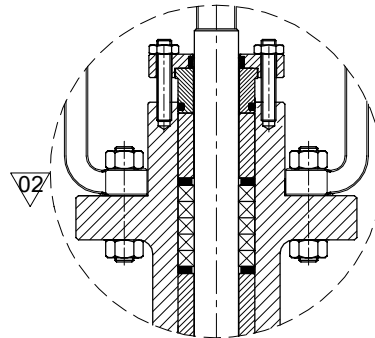


CONTROL VALVE
MODEL: GCV - B - EC

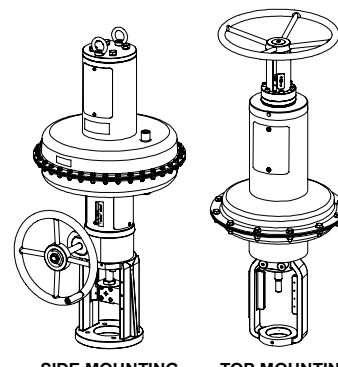
ON-OFF VALVE
MODEL: CBGL-EC-O-F



ACTUATOR MOUNTING
WITH LOCK NUT

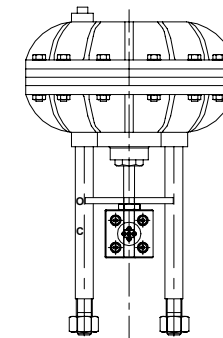


ACTUATOR MOUNTING
WITH STUD AND NUTS



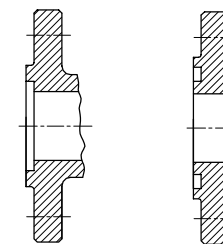
ACTUATOR WITH
OPTIONAL HANDWHEEL

OPTIONAL ACTUATOR TYPE



PNEUMATIC ACTUATOR
WITH PILLAR TYPE

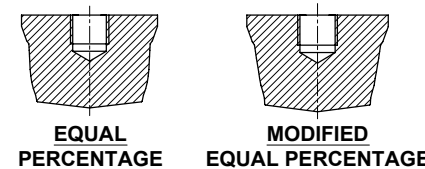
OPTIONAL VALVE ENDS



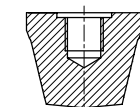
SMALL
TONGUE SMALL
GROOVE

(OTHER END CONNECTION
AVAILABLE AS PER REQUIREMENT)

OPTIONAL PLUG TYPES



EQUAL
PERCENTAGE MODIFIED
EQUAL PERCENTAGE



LINEAR TYPE

REV	REV DATE	DETAILS	APPROVED BY
01	29-01-2020	CHANGES MENTIONED 01	PRADHIP G
02	05-06-2020	CHANGES MENTIONED 02	PRADHIP G
03	10-11-2020	CHANGES MENTIONED 03	PRADHIP G
04	21-12-2020	PISTON TYPE ACTUATOR REMOVED	PRADHIP G
05	19-02-2026	CHANGES MENTIONED 05	HARISH

DIMENSIONAL DETAILS:

DN	25	40	50	80	100	150
ØD	125	155	165	210	255	320
ØP	88.9	114.3	127	168.3	200	269.9
ØR	50.8	73	92.1	127	157.2	215.9
T	17.9	21.1	22.7	29	32.2	37
t	2	2	2	2	2	2
K	4/Ø19	4/Ø22	8/Ø19	8/Ø22	8/Ø22	12/Ø22
L	203	229	267	318	356	444
Body & Bonnet Thickness (min)	6.3	7.9	9.5	11.9	12.7	15.9

23	GLAND STUD / NUT	ASTM - A 320 Gr.L7 / L7M / A 194 Gr.7 / 7M
22	INTEGRAL SEAT	ASTM - A 352 Gr. LCC / LCB + STELLITED
21	STEM NUT	ASTM - 316L / HASTELLOY / MONEL / DUPLEX S31803
20	GUIDE BUSH	HASTELLOY - C 276 / MONEL / 316L
19	CAGE	ASTM -316L / 316 /MONEL / HASTELLOY
18	SEAT RING	ASTM - 316L / 316 / MONEL / LF2 HASTELLOY + STELLITED
17	CYLINDER	ASTM - A 352 Gr. LCC / LCB
16	ACTUATOR	REFER NOTE (" k ")
15	FASTENERS	ASTM - A 320 Gr.L7 / L7M / A 194 Gr.7 / 7M
14	GASKET	SPW - SS 316L/316 + PTFE/MONEL+PTFE
13	PACKINGS	PTFE
12	GLAND FLANGE	ASTM - 304 / A 351 Gr.CF8 / A 352 Gr. LCC /A 352 Gr. LCB/ A 350 Gr.LF2
11	GLAND BUSH	ASTM - A 276 TYPE 316L / A 351 Gr.CF3M / 316 / A351 Gr.CF8M / HASTELLOY / MONEL
10	SPACER	HASTELLOY - C 276 / MONEL / 316L
9	GLAND RING	HASTELLOY - C 276 / MONEL / 316L
8	LOWER GUIDE	HASTELLOY - C 276 / MONEL / 316L
7	TOP COLLAR	HASTELLOY C 276
6	STEM	ASTM - TYPE 316L / 316 / MONEL / HASTELLOY / DUPLEX S31803
5	BELLOW	HASTELLOY C276
4	BELLOW COLLAR	HASTELLOY C 276
3	PLUG	ASTM - A 350 Gr.LF2 / A 351 Gr. CF8M / CF3M HASTELLOY / MONEL / 316L / 316 / ASTM - A 352 Gr. LCC / LCB
2	BONNET	ASTM - A 352 Gr. LCC / LCB
1	BODY	ASTM - A 352 Gr. LCC / LCB
Sr.No	PARTS	MATERIAL OF CONSTRUCTION

CLASS - 300#

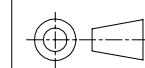
GLOBE BELLOW SEAL CONTROL & ON-OFF VALVE

DRG NO.:

BOS-S-19171 REV 05

NOTE:-

- VALVE DESIGNED AS PER EURO-CHLOR GEST 17 / 492
- APPLICATION SHALL BE LIQUID CHLORINE & DRY GASEOUS CHLORINE
- VALVE FACE TO FACE EN 558 / ASME B16.10 / ISA 75.08.01
- FLANGED END TO ASME B 16.5 / EN1092-1 WITH RAISED FACE SERRATED FINISH
- TESTING AS PER EN 12266-1 / GEST 17/492 / ISA 75.19
- INLET AND OUTLET FLANGES SECURELY BOLTED WITH BLANK FLANGES AND FITTED WITH SUITABLE GASKETS
- OPTIONAL OTHER GRADES OF MATERIAL AVAILABLE (BASED ON PRESSURE, TEMPERATURE AND MEDIA) WHEN REQUESTED AS PER EURO CHLOR GEST 79/82
- DIFFERENT TYPE OF FLANGE FACING AVAILABLE AS PER REQUIREMENT
- OPTIONAL OTHER RATING AND OTHER VALVE SIZE AVAILABLE AS PER CUSTOMER REQUIREMENT
- DRAIN TAPPINGS IN THE BODY ARE NOT PERMITTED
- PNEUMATIC ACTUATOR USED ALONG WITH ACCESSORIES LIKE AFR, POSITIONER, SOLENOID VALVE & LIMIT SWITCHES
- OTHER TYPES OF ACTUATORS AVAILABLE AS PER CUSTOMER REQUIREMENT
- PLUG SHALL BE STELLITED AS PER CUSTOMER REQUIREMENT



ALL DIMENSIONS ARE IN MM

IF IN DOUBT.
ASK...

SCALE
N.T.S.

APPD.	P.G	Pradhip G
DT.	08.05.2019	
CHKD.	P.G	Pradhip G
DT.	08.05.2019	
DRN.	N.S	Nikhil S
DT.	08.05.2019	

